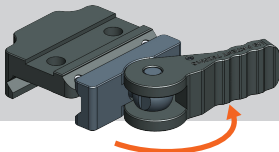


⚠ ENSURE FIREARM IS UNLOADED

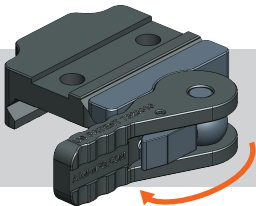
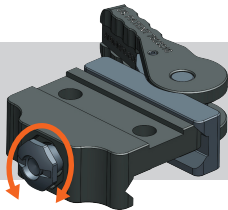
⚠ WARNING: Over-torquing fasteners can damage your mount and will not be covered by warranty.

Your Fusion Thermal Premium Mount comes with a top notch ADM Quick Detach assembly pre-adjusted to industry standard military picatinny rail specifications. If you find your Fusion Thermal optic is too tight or too loose on your particular rail, you can easily adjust the clamping system to perfect tension.



To fine-tune the clamping force on your picatinny rail, while mounted on the weapon first unlock the mount by depressing the lock button and swing the lever 180 degrees to the open position and push the assembly gently towards the opposite side to protrude the adjustment nut.

To adjust the tension, with the adjustment nut protruding clear of the base, tighten (clockwise) or loosen (counter-clockwise) the nut 1/8 to 1/4 turn at a time with your fingers, ensuring the nut is properly aligned and recessed in the base after adjustment.



Test the tension between adjustments by fully rotating the lever back to the locked position. When properly adjusted, the optic should be solidly mounted on the rail with no movement, but able to be locked with only moderate force and no tools.

Note: illustrative mount shown to highlight the lever and adjustment, your Fusion Thermal Premium Mount will appear slightly different.